

Installation Guide

Stair components



Please read all instructions **carefully** before starting installation of stair components. **Make sure you comply with current building code requirements**, especially with regard to **minimum and maximum dimensions for treads and risers**, as well as possible dimensional variations from one tread to another.

PRODUCT USE

Recommended installation



Nailed-Stapled



Glued

Mirage TruBalance and TruBalance Lite stair components* are used to cover a staircase structure; they have no structural value. They can be installed starting from the top of the staircase down or vice versa, from the bottom up. Only a flush mount installation, i.e., between two walls, is possible. Their composition allows them to be glued to a staircase structure made of wood (plywood, particle board, etc.) that meets the requirements of the current building code.

* Visit the Stair Components section of miragefloors.com or contact your customer service agent for the complete product offering.

INSTALLER AND OWNER RESPONSIBILITY

The owner is responsible for hiring a qualified installer with the skills to perform a compliant stair component installation, as stair components require a high level of precision. Prior to installation, the installer and owner should conduct a final inspection of the grade, color, manufacturing and finish quality of the stair components to ensure that the stair components to be installed conform to the product purchased.

Once installed, all stair components are considered as having been accepted by installer and owner, even if owner is absent at time of installation. When ordering the stair components required for a staircase, it is recommended to add to the square footage needed an allowance for cutting waste.

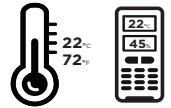
HANDLING AND ACCLIMATIZATION

Prefinished stair components requires a little more time and precaution than unfinished components; handle with care to avoid component surface and finish damage.

PRE-INSTALLATION CHECK LIST

Basic requirements

- Stair components should be the very last step of any construction or renovation project.
- Prior to installation, heating system must be in operation, and room temperature must have been maintained at $\pm 72^{\circ}\text{F}$ ($\pm 22^{\circ}\text{C}$) for at least one week.
- **Relative humidity must be maintained around $\pm 45\%$ at all times.** Relative humidity must always be maintained within a range of 25% and 70%.



Subfloor moisture level check

Using a wood moisture meter, available from your Mirage Authorized dealer, make sure the **moisture reading for the staircase structure must not exceed 12%** and differential between the stair components and the structure must be less than 4%. If the moisture reading is too high, postpone installation, find moisture source and correct it if needed. Raise heat and increase ventilation until proper conditions are met.



Product Temperature

Note: Ensure boxes reach room temperature if necessary. Do not open boxes or remove plastic wrap before starting installation.

Owner and installer are solely and jointly responsible for pre-installation subfloor moisture level check and must ensure that all conditions and/or specifications listed in this guide have been thoroughly met prior to installation of hardwood floor.

MIRAGE*, Technical Service

1255, 98th Street, Saint-Georges (Quebec) Canada G5Y 8J5

Tel.: 418-227-1181 – 800-463-1303 – Fax: 418-227-1188

Or by email: technical@miragefloors.com

* MIRAGE, our renewed corporate brand, embodies the quality and care found in our prestigious brands such as Mirage Hardwood Floors and Vintage Hardwood Floors. Our legal entity is called Boa-Franc G.P

RECOMMENDED TOOLS AND ACCESSORIES

- Vacuum cleaner or broom
- Leveling bar
- #20 grit sandpaper (optional)
- Wood moisture meter (and concrete moisture meter if required)
- Leveling compound (optional)
- Power drill and 3/32" (2 mm) bit
- Claw Hammer
- Pry bar
- Measuring tape
- Repair Kit
- KLEAN by mirage (maintenance kit)
- Pneumatic staplers/nailers
- Scraper
- Level
- Trowel
- Cleaning cloths
- Miter saw
- 3M blue adhesive tape
- Nail punch
- Square 16" x 24"
- Security glasses
- Glue gun
- Cloth Mop
- Finishing nails: 20 GA or 18 GA

PREPARATION

Wear security equipment and maintain a safe environment at all times. Refer to our [Technical Newsletter #23](#) in the Guides and Support section of miragefloors.com for the performance criteria of recommended adhesives.

- Glue tube and gun for glue assist.
- Pail of adhesive and the trowel recommended by the adhesive manufacturer, as the right trowel tooth size is very important to ensure a good bond.
- 3M blue adhesive tape or easily removable equivalent.
- Remover towels for hand and tool cleaning.
- Adhesive cleaner.



If applicable, you can use the fasteners recommended in [Technical Newsletter #30](#) in the Guides and Support section of miragefloors.com.

- Pneumatic staplers/nailers.
- Power drill and 3/32" (2 mm) bit.
- Finishing nails: 20 GA or 18 GA.

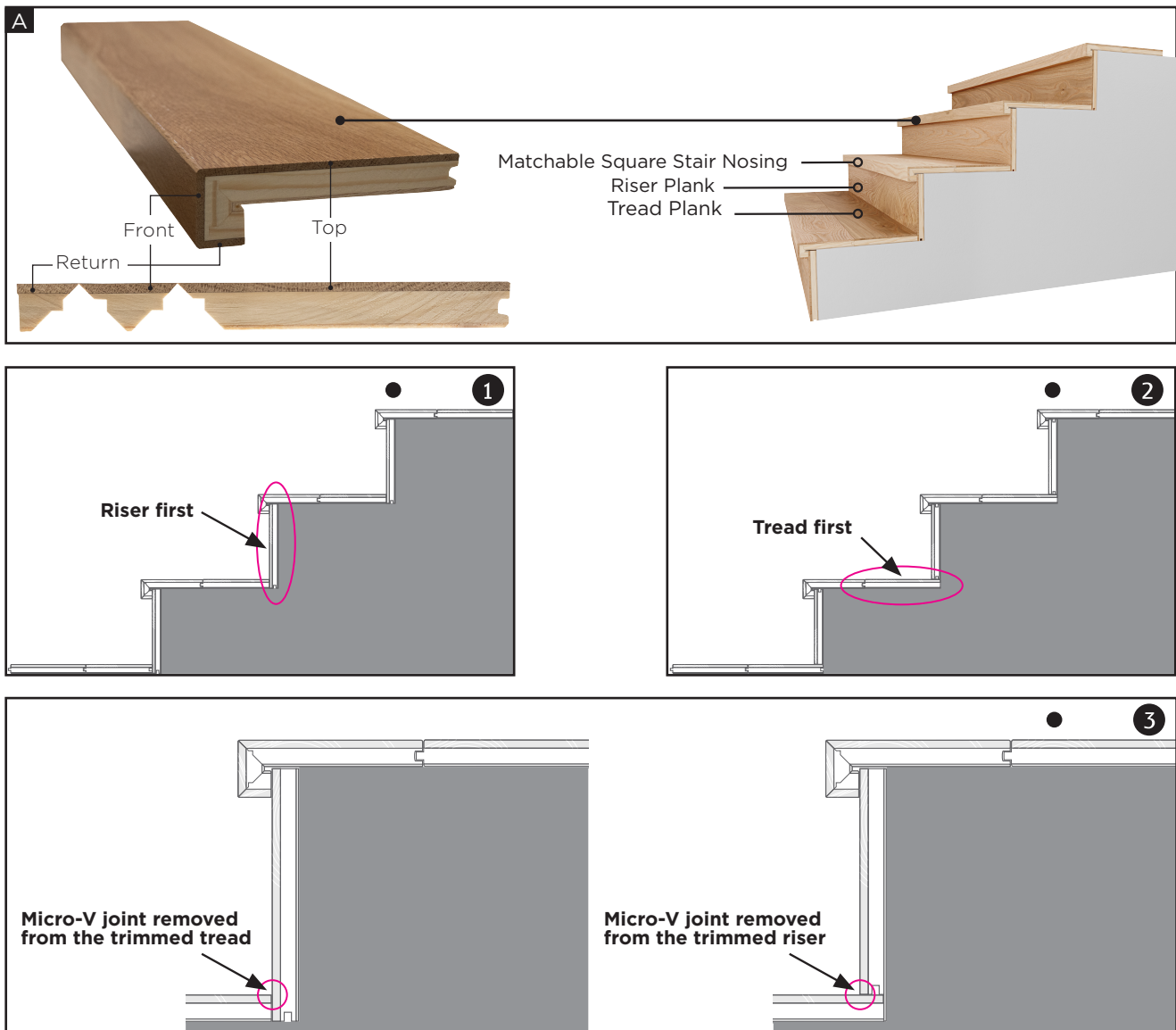
Notes:

- Only cover surfaces that can be reasonably laid in two hours, since adhesive may dry too quickly and not stick properly. Reaction time may vary from one adhesive to another and may also be affected by room temperature and relative humidity (see manufacturer's specs on container).
- Avoid getting adhesive on hands to minimize clean up. **Wipe any adhesive from stair components right away, using solvent and towels.**
- Use paint thinner or lighter fluid to remove stubborn adhesive spills.
- Ensure that stapler/nailer base plate remains clean and free from nicks at all times.
- When stapler/nailer is not being used, place on piece of plywood or cardboard, but never directly onto floor or stair components.
- Ensure that stapler/nailer base sits flat on the top of a stair component and plumb against the nosing before stapling board down.
- **Check base plate condition and proper operation of nailer/stapler regularly** to avoid damage to the stair components.
- Set and check air pressure regularly on subfloor types requiring specific air pressure settings.

Note: MIRAGE cannot be held responsible for any floor damage resulting from use of inadequate fasteners or adhesive, differing from those recommended. All the installation material must be at the recommended room temperature prior to the installation ± 72 °F (± 22 °C).

INSTALLATION (Illustration A)

- Depending on the desired visual appearance, installation can start with a riser ① or a tread ②; the size of the components allows for either type of installation. It's up to the owner to agree on one or the other with their installer.
- Most of the time, the micro-V joint is removed at the junction of the tread and riser, depending on the desired visual appearance. It's up to the owner to agree on one or the other with their installer. (Illustration number ③)
- Extremely precise milling may require use of tapping block for better components fit.
- Use a glass-free adhesive recommended in [Technical Newsletter #23](#), in the Guides and Support section of miragefloors.com to find out the performance criteria for recommended adhesives. Do not use a standard water-based construction adhesive.
- During installation, it may be necessary to nail the top of components with light-gauge nails while the adhesive reacts.
- It is strongly recommended not to walk on freshly glued stair components.



Go to the Stair Components section of miragefloors.com for more details.

Post-installation

- Wait 24 hours before allowing heavy traffic.
- Set a few stair components aside in case of future repairs.
- When installation is completed, vacuum thoroughly, spray light mist of KLEAN by mirage Hardwood Floor Cleaner on terry cloth mop and clean.

